

Stage Technology offers several types of theatre fabrics for all of your staging and masking needs. Whether it is Erosion Cloth to texture scenery, Muslin for costume mock-ups, or iridescent silky Chiffons for that extra something, Stage Technology sells it all.



Muslin

MUSLIN

Non-Flame Retardant

Medium-weight Natural Muslin is the fabric typically used for covering scenic flats and constructing drops. Natural Muslin takes paint easily and can be repainted several times without damage to the fabric. This un-dyed woven fabric is more durable and cost-effective than the light-weight muslin found in fabric stores. Stage Technology has medium-weight muslin in widths of 80", 108" and 120" in stock for immediate delivery and can supply a large variety of other weights, sizes and colors.

Light Weight	45" wide	Best for texture material and pattern making.
Medium Weight	40" to 120" Wide	Small Drops, Hard Flats, Liners, and pattern making.
Heavy Weight	59" to 140" Wide	Cycloramas, Soft Flats, and Larger Drops.

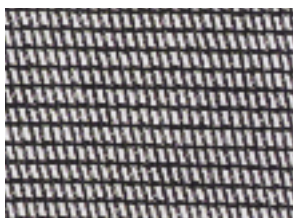


Commando Cloth

DUVETYN/COMMANDO CLOTH

Flame Retardant

Duvelty and Commando Cloth are the names of a popular line of lightweight stage masking and drapery fabrics. Commando Cloth is the heavier of the two, and is often used as a cost effective alternative to Velour for use with smaller stage curtains. Offered in 8 different colors, and a variety of weights ranging from 8 ounces to 16 ounces, Commando Cloth's light absorbing properties make it ideal as stage masking.



Sharktooth Scrim

SHARKSTOOTH SCRIM

Flame Retardant

100% cotton. Commonly used for "bleed through" effect. When Sharktooth Scrim is lit from the front at a high oblique angle and the stage behind the scrim is totally dark, the scrim appears opaque and renders the scene behind the scrim invisible. When the scene behind the scrim is illuminated and the front lights on the scrim are dimmed, the scrim becomes "invisible," revealing the upstage scene.



Painter's Scrim

PAINTER'S SCRIM

Non-Flame Retardant

A 100% cotton. Identical to Sharktooth Scrim. Painters Scrim is not bleached, dyed or Flame Retardant- a favorite among scenic artists.



Glame'

OTHER FABRICS AVAILABLE ON OUR WEBSITE

Call or email us for samples

- Gauzes
- Burlaps
- Metallics
- Felts
- Netting
- Sheers
- Velours
- Cottons
- Glame'
- Silks
- Spandex
- Synthetics
- Leno
- Textilene
- Lining Fabrics
- Canvas



Natural NFR Muslin

PART #	DESCRIPTION	PRICE
51-01110	80" Natural NFR Muslin – medium weight	4.25/yd
51-01110-B	80" Natural NFR Muslin – 50 yd. Bolt	190.00
51-01120	108" Natural NFR Muslin – medium weight	6.15/yd
51-01120-B	108" Natural NFR Muslin – 50 yd. Bolt	270.00
51-01125	120" Natural NFR Muslin – medium weight	6.55/yd
51-01125-B	120" Natural NFR Muslin – 50 yd. Bolt	290.00
51-01270	54" Black Commando Cloth	6.50/yd
51-01270-B	54" Black Commando Cloth – 100 yd. Bolt	600.00
51-01210	19'-6" White Sharktooth Scrim	Call for price
51-01220	19'-6" Black Sharktooth Scrim	Call for price
51-01227	39'-6" Painter's Scrim	Call for price

To place your order or for technical help call **1-800-889-4081**.

Don't forget to take your discount. See back cover for details.



Scenic

Fabrics / Scenic Materials



Don't forget to take your discount.
See back cover for details.



Poly Silk

POLY SILK

Flame Retardant

Lightweight, translucent synthetic fabric. Drapes well. Economical silk substitute. Comes in a variety of colors. Width of 45 inches. 100% polyester. Call for price and color options.



Chiffon

CHIFFON

Flame Retardant

Lightweight polyester. Sheer. Used for reveals in industrials, theater, dance and nightclubs. Comes in a variety of colors. Width of 45 inches. Can be made flame retardant. Call for price and color options.



Crushed Velvet

CRUSHED VELVET

Flame Retardant

Medium Weight, synthetic crushed velvet. 100% Rayon. Colors available include silver, copper, honor gold, scarlet cardinal, regal purple, Caribbean blue moss, gunpowder, black.



Crushed Trevira Silk

CRUSHED TREVIRA SILK

Flame Retardant

52" wide. The look and feel of real silk. Colors available include white, ivory, citron, gold, cappuccino, India red, crimson, sapphire, indigo, peacock, lt. grey, black.

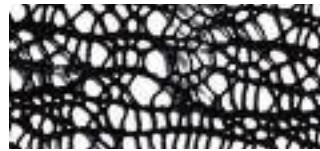


Spandex

SPANDEX

Flame Retardant

77" wide. Colors available include white, yellow, orange, red, fuchsia, purple, turquoise, royal, silver, black.

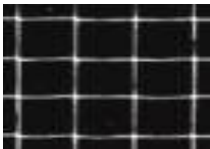


Spider Stretch

SPIDER STRETCH

Flame Retardant

60" Wide. 90% Polyester 10% Spandex. Colors available include Bermuda (blue), black, cappuccino (brown), iguana (green), and white. Spider Stretch is woven in a pattern that appears random, making it ideal for lighting and shadow effects. Because of the random pattern and texture, seams are not noticeable when serged.



InterNet

INTERNET PLASTIC BACKDROP NETTING

InterNet is available in black or white colors. It contains 1/2" holes and weighs only 10 lbs per 1000 sq. feet. The material is non flame retardant.

PART#	DESCRIPTION	PRICE
51-01400	InterNet Black Plastic Mesh – 14'W x 25'L, 1/2" x 1/2" Holes	POA
51-01402	InterNet Black Plastic Mesh – 14'W x 50'L, 1/2" x 1/2" Holes	POA
51-01404	InterNet Black Plastic Mesh – 14'W x 100'L, 1/2" x 1/2" Holes	POA
51-01410	InterNet White Plastic Mesh – 14'W x 25'L, 1/2" x 1/2" Holes	POA
51-01412	InterNet White Plastic Mesh – 14'W x 50'L, 1/2" x 1/2" Holes	POA
51-01414	InterNet White Plastic Mesh – 14'W x 100'L, 1/2" x 1/2" Holes	POA



Slit Drape

ROSCO SLIT DRAPE

Slit Diffraction material picks up and bounces light. Fabricated entirely of durable self-extinguishing vinyl. Each Slit Drape unit is 3' (0.9m) wide and as many units as needed may be used for a seamless, continuous curtain. Slit drape is Rosco's exciting version of the familiar slashed curtains widely used in the display trade and the performing arts. Overlapping 1/8" layers of material provide a remarkable effect of bouncing, shimmering light. The diffraction used in some of the models refracts the light into spectacular patterns of color.

PART#	DESCRIPTION	PRICE
82-15300-08	Rosco 8' Black Slit Drape 8'H x 3'W	13.21
82-15300-16	Rosco 16' Black Slit Drape 16'H x 3'W	28.00
82-15300-24	Rosco 24' Black Slit Drape 24'H x 3'W	55.99
82-15302-08	Rosco 8' Silver Slit Drape 8'H x 3'W	13.21
82-15302-16	Rosco 16' Silver Slit Drape 16'H x 3'W	28.00
82-15302-24	Rosco 24' Silver Slit Drape 24'H x 3'W	55.99
82-15304-08	Rosco 8' Gold Slit Drape 8'H x 3'W	13.21
82-15304-16	Rosco 16' Gold Slit Drape 8'H x 3'W	28.00
82-15304-24	Rosco 24' Gold Slit Drape 24'H x 3'W	55.99
82-15316-08	Rosco 8' Iridescent Slit Drape 8'H x 3'W	15.79
82-15316-16	Rosco 16' Iridescent Slit Drape 16'H x 3'W	34.34
82-15316-24	Rosco 24' Iridescent Slit Drape 24'H x 3'W	72.62

Black/Silver, Black/Gold, Black/Diffraction, White/Diffraction, Silver/Diffraction, or Silver/Iridescent/Gold slit drape varieties are available.

STAGE DRAPERIES

Stage Technology has provided and installed drapery and hardware for thousands of stages large and small. Our drapery and hardware is manufactured using the highest standards. Call or write for our free STAGE DRAPERIES GUIDE and fabric swatches.

Drapery Specification

Draperies supplied will be vat dyed and fully flameproofed by the immersion process. All fabric cuts will be full length with no splices. All draperies will have a heavy duty jute webbing triple stitched and have machine set brass grommets on one-foot centers with tie lines or S hooks, as required. All draperies will have 50% fullness pleated on one-foot centers with box pleats. Floor length draperies will have a six-inch bottom hem with a suspended inner pocket containing #8 zinc jack chain weight. All side hems will be three-inch, except the center edges of traveler draperies, which will have eighteen-inch facebacks.

How to Measure for Replacement Curtains

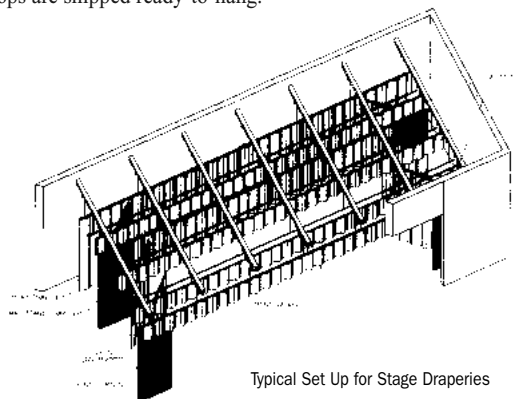
The only things you will need to order your new draperies are a tape measure, a step ladder and a few minutes of your time.

To manufacture your replacement curtains, Stage Technology will need the following dimensions:

- a) The finished height and width of your existing curtains as they hang (if pleated measure the width at the webbing).
- b) The number of carriers in your track.
- c) What type of track you have (See page 61 for examples of tracks).

Cyclorama Curtain and Scrim Specifications

All backdrops are fabricated with heavy jute webbing at the top, machine-set brass grommets on 12" centers, and tie lines for hanging. Side hems are 2", with a 6" open pocket at the bottom to accept a weight pipe or chain (pipe additional). All drops are shipped ready-to-hang.



Types of Theatrical Curtains

Front Curtain– Usually made from velour, many colors are available.

Valance Curtain– Always the same colors as the Front Curtain, used to mask the front curtain and control the height of the proscenium opening.

Legs or Tormentor Curtain– Traditionally made of black velour, commando cloth, or heavyweight repp cloth and used to mask the space on either side of the proscenium (wings) from view of the audience.

Border or Teaser Curtain– Typically made of the same fabric as Legs. Used to mask the audiences view of the ceiling of the stage area.

Mid-Stage Traveler or Oleo Curtain– Sometimes made in color, but most often black velour, commando cloth, or heavyweight repp cloth. Used to shorten the playing space of the stage (i.e., one act plays or small musical groups). Also used as movie screen masking.

Upstage or Rear Traveler Curtain– Usually black velour, commando cloth or heavyweight repp cloth, used as a backdrop for stage presentations. Fabric selected should be the same as used for Borders and Legs.

Cyclorama Curtain– Most often made of seamed or seamless natural or sky blue muslin. Used as a neutral backdrop for stage settings. Very often lit with colored light to set atmosphere for different scenes.

Scrim Drops– Often used in much the same way as a cyclorama. Can be used for special effects, (i.e., to reveal scenes, soften cyclorama lighting, etc.). Opaque from the front, transparent when backlit.

PLEASE CALL, WRITE OR E-MAIL FOR PRICING.



Theatres come in many shapes and sizes and as such, there are no standard size stage draperies. But to assist you in establishing a budget for new curtains, the packages listed below are based on average size for a small theatre, a medium-size theatre, and a larger sized theatre. Since many more options are available than those shown here, we will be happy to provide a custom quote for your project based on the exact sizes, fullness, and fabrics that will best suit your needs.

DRAPERY PACKAGE FOR A SMALL THEATRE (Proscenium 16'H x 30'W, Stage Depth 20')

**For Budgetary Purposes Only. Please call 1-800-889-4081 for competitive pricing.

QTY.	DESCRIPTION	PRICE EACH	TOTAL
2	Front Traveler Panels; 18'-0"H x 20'-0"W, 50% fullness, KM 21 oz. Virtue velour-standard color, with jute webbing, grommets, and hooks at top, suspended chain pocket at bottom	\$1,143.00	\$2,286.00
1	Front Valance; 4'-0"H x 32'-0"W, 50% fullness, KM 21 oz. Virtue velour-standard color, with ties, jute webbing, grommets and ties at top	\$708.00	\$708.00
6	Legs; 18'-0"H x 6'-0"W, 50% fullness, KM 16 oz. Princess velour-black, with jute webbing, grommets, and ties at top, suspended chain pocket at bottom	\$248.00	\$1,148.00
3	Borders; 6'-0"H x 38'-0"W, 50% fullness, KM 16 oz. Princess velour-black, with jute webbing, grommets, and ties at top	\$861.00	\$2,583.00
2	Rear Traveler Panels; 18'-0"H x 20'-0"W, 50% fullness, KM 16 oz. Princess velour-black, with jute webbing, grommets, and hooks at top, suspended chain pocket at bottom	\$913.00	\$1,826.00
1	Black Sharkstooth Scrim, Seamless, 18'-0"H x 38'-0"W, 0% Fullness, with jute webbing, grommets and ties at top, pipe pocket at bottom	\$1,592.00	\$1,592.00
1	Natural FR Muslin Cyclorama, Seamless, 18'-0"H x 38'-0"W, 0% Fullness, with jute webbing, grommets and ties at top, pipe pocket at bottom	\$1,141.00	\$1,141.00
FREIGHT NOT INCLUDED		TOTAL:	\$11,624.00

DRAPERY PACKAGE FOR A MEDIUM THEATRE (Proscenium 20'H x 40'W, Stage Depth 25')

**For Budgetary Purposes Only. Please call 1-800-889-4081 for competitive pricing.

QTY.	DESCRIPTION	PRICE EACH	TOTAL
2	Front Traveler Panels; 22'-0"H x 25'-0"W, 50% fullness, KM 25 oz. Majestic velour-standard color, with jute webbing, grommets, and hooks at top, suspended chain pocket at bottom	\$1,846.00	\$3,692.00
1	Front Valance; 4'-0"H x 42'-0"W, 50% fullness, KM 25 oz. Majestic velour-standard color, with ties, jute webbing, grommets and ties at top	\$985.00	\$985.00
8	Legs; 22'-0"H x 8'-0"W, 50% fullness, KM 21 oz. Virtue velour-black, with jute webbing, grommets, and ties at top, suspended chain pocket at bottom	\$513.00	\$4,104.00
4	Borders; 6'-0"H x 48'-0"W, 50% fullness, KM 21 oz. Virtue velour-black, with jute webbing, grommets, and ties at top	\$1,209.00	\$4,836.00
2	Rear Traveler Panels; 22'-0"H x 25'-0"W, 50% fullness, KM 21 oz. Virtue velour-black, with jute webbing, grommets, and hooks at top, suspended chain pocket at bottom	\$1,544.00	\$3,088.00
1	Black Sharkstooth Scrim, Seamless, 22'-0"H x 48'-0"W, 0% Fullness, with jute webbing, grommets and ties at top, pipe pocket at bottom	\$2,347.00	\$2,347.00
1	Natural FR Muslin Cyclorama, Seamless, 22'-0"H x 48'-0"W, 0% Fullness, with jute webbing, grommets and ties at top, pipe pocket at bottom	\$3,052.00	\$3,052.00
FREIGHT NOT INCLUDED		TOTAL:	\$22,104.00

DRAPERY PACKAGE FOR A LARGE THEATRE (Proscenium 25'H x 60'W, Stage Depth 35')

**For Budgetary Purposes Only. Please call 1-800-889-4081 for competitive pricing.

QTY.	DESCRIPTION	PRICE EACH	TOTAL
2	Front Traveler Panels; 27'-0"H x 35'-0"W, 50% fullness, KM 25 oz. Majestic velour-standard color, with jute webbing, grommets, and hooks at top, suspended chain pocket at bottom	\$3,034.00	\$6,068.00
1	Front Valance; 5'-0"H x 62'-0"W, 50% fullness, KM 25 oz. Majestic velour-standard color, with ties, jute webbing, grommets and ties at top	\$1,628.00	\$1,628.00
10	Legs; 27'-0"H x 12'-0"W, 50% fullness, KM 21 oz. Virtue velour-black, with jute webbing, grommets, and ties at top, suspended chain pocket at bottom	\$812.00	\$8,120.00
5	Borders; 7'-0"H x 68'-0"W, 50% fullness, KM 21 oz. Virtue velour-black, with jute webbing, grommets, and ties at top	\$1,870.00	\$9,350.00
2	Rear Traveler Panels; 27'-0"H x 35'-0"W, 50% fullness, KM 21 oz. Virtue velour-black, with jute webbing, grommets, and hooks at top, suspended chain pocket at bottom	\$2,523.00	\$5,046.00
1	Black Sharkstooth Scrim, Seamless, 27'-0"H x 68'-0"W, 0% Fullness, with jute webbing, grommets and ties at top, pipe pocket at bottom	\$3,288.00	\$3,288.00
1	Natural FR Muslin Cyclorama, Seamless, 27'-0"H x 68'-0"W, 0% Fullness, with jute webbing, grommets and ties at top, pipe pocket at bottom	\$4,971.00	\$4,791.00
FREIGHT NOT INCLUDED		TOTAL:	\$38,471.00

DROPS AND SCRIMS

FAQ—MUSLIN AND CANVAS DROPS

When would I want to use canvas over muslin?

Canvas is of a generally heavier weave and of greater durability than muslin. Basically, canvas is tough enough to withstand repeated paintings and cleanings while muslin is generally too lightweight to hold up against repeated exposure to the binders in scenic paints. Canvas also makes excellent groundcloths and protective liners.

Why would I want to use a non-flame retardant drop?

Non-flame retardant drops are used for scenic painting. The average flame retardant is salt based, so when the moisture of scenic paints interacts with the salts, it causes them to leach to the surface leaving a discoloration. It is possible to add the flame

retardant to the paint directly to prevent this. Please see Rosco's Flamex P50—Paint Additive on page 66.

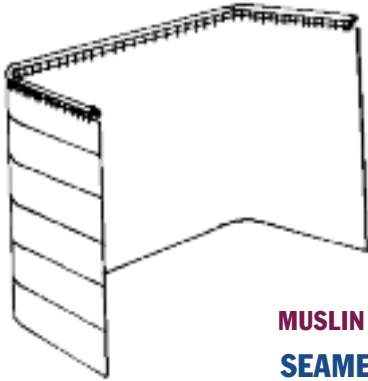
How do I make scrims conceal and reveal?

It's a trick of the light. Start by lighting your scrim at a sharp angle from either the side, or the top. The scene behind the scrim must remain completely dark and spaced a short distance back from the scrim. The scrim should now appear opaque. When the hidden scene is lit, and the scrim front lighting is dimmed, the scrim will appear to vanish and the scene will pop into view.



Stage Technology offers a large selection of reasonably priced backdrops and scrim that feature quality materials and workmanship. The price grids presented here represent only a fraction of the fabrics and sizes available from Stage Technology. Please contact your Stage Technology salesperson or check out our website for details.

MUSLIN/CANVAS NFR/FR DROPS



FAQ—MUSLIN AND CANVAS DROPS

How do I read these charts?

The best way to read the charts is to cross reference the height versus the width. This will show the price for that standard size of drop. If you need a drop that doesn't exactly fit the chart, here is how to find your price.

- When the height is different, find the columns that is up to, but not exceeding, your height. Match this column to your width. Example: you need a NFR Seamed Muslin Drop to be 15'-0" in height. The chart shows up to 12'-6" and then up to 16'-9". Your drop would fall under the 16'-9" column as it is greater than the 12'-6", but less than the 16'-9".
- If the width is different, find the row whose width is closest to what you need. Divide this price by the rows width, and multiply the resulting number by the width you need. Example: You want a NFR Seamed Muslin Drop to be 42'-0" in width. The chart shows a 40' width at \$269.00. Dividing this by 40 gives us 6.725 which, when multiplied by your required width of 42, results in a price of \$282.45.

MUSLIN DROPS WILL SHIP WITHIN 72 HRS! (EXCLUDING HOLIDAYS AND WEEKENDS)

SEAMED MUSLIN DROPS—NON-FLAME RETARDANT

Up to Height	8'2"	9'2"	12'6"	16'9"	18'6"	25'6"	28'6"	34'0"	38'8"
Drop Width 20'	\$119.00	\$170.00	\$170.00	\$216.00	\$254.00	\$257.00	\$304.00	\$312.00	\$364.00
Drop Width 24'	\$143.00	\$204.00	\$204.00	\$259.00	\$306.00	\$309.00	\$365.00	\$374.00	\$437.00
Drop Width 28'	\$167.00	\$237.00	\$237.00	\$301.00	\$356.00	\$359.00	\$425.00	\$435.00	\$510.00
Drop Width 32'	\$190.00	\$271.00	\$271.00	\$346.00	\$407.00	\$410.00	\$486.00	\$497.00	\$583.00
Drop Width 36'	\$214.00	\$306.00	\$306.00	\$389.00	\$458.00	\$462.00	\$546.00	\$559.00	\$646.00
Drop Width 40'	\$239.00	\$340.00	\$340.00	\$431.00	\$508.00	\$513.00	\$607.00	\$622.00	\$729.00
Drop Width 44'	\$261.00	\$373.00	\$373.00	\$474.00	\$560.00	\$565.00	\$668.00	\$684.00	\$801.00
Drop Width 48'	\$286.00	\$407.00	\$407.00	\$517.00	\$611.00	\$616.00	\$728.00	\$746.00	\$874.00
Drop Width 52'	\$310.00	\$441.00	\$441.00	\$561.00	\$661.00	\$668.00	\$790.00	\$809.00	\$946.00
Drop Width 56'	\$334.00	\$476.00	\$476.00	\$604.00	\$713.00	\$719.00	\$851.00	\$871.00	\$1,019.00
Drop Width 60'	\$357.00	\$509.00	\$509.00	\$647.00	\$764.00	\$771.00	\$911.00	\$933.00	\$1,091.00
Drop Width 64'	\$381.00	\$543.00	\$543.00	\$690.00	\$814.00	\$822.00	\$972.00	\$996.00	\$1,164.00
Drop Width 68'	\$406.00	\$577.00	\$577.00	\$733.00	\$865.00	\$874.00	\$1,032.00	\$1,058.00	\$1,237.00
Drop Width 72'	\$429.00	\$611.00	\$611.00	\$777.00	\$917.00	\$925.00	\$1,093.00	\$1,120.00	\$1,310.00
Drop Width 76'	\$453.00	\$644.00	\$644.00	\$820.00	\$967.00	\$975.00	\$1,154.00	\$1,181.00	\$1,383.00
Drop Width 80'	\$477.00	\$679.00	\$679.00	\$863.00	\$1,018.00	\$1,026.00	\$1,214.00	\$1,243.00	\$1,456.00

SEAMED MUSLIN DROPS—FLAME RETARDANT

Up to Height	15'3"	17'0"	23'3"	31'4"	39'6"	43'0"	47'6"	52'0"	56'0"	61'0"
Drop Width 20'	\$221.00	\$276.00	\$294.00	\$366.00	\$439.00	\$574.00	\$511.00	\$673.00	\$583.00	\$773.00
Drop Width 24'	\$266.00	\$331.00	\$353.00	\$440.00	\$536.00	\$689.00	\$613.00	\$809.00	\$700.00	\$927.00
Drop Width 28'	\$310.00	\$386.00	\$411.00	\$513.00	\$614.00	\$804.00	\$716.00	\$943.00	\$816.00	\$1,081.00
Drop Width 32'	\$354.00	\$441.00	\$470.00	\$586.00	\$701.00	\$919.00	\$817.00	\$1,077.00	\$933.00	\$1,237.00
Drop Width 36'	\$399.00	\$497.00	\$529.00	\$660.00	\$790.00	\$1,034.00	\$920.00	\$1,213.00	\$1,050.00	\$1,391.00
Drop Width 40'	\$443.00	\$551.00	\$589.00	\$733.00	\$877.00	\$1,149.00	\$1,021.00	\$1,347.00	\$1,166.00	\$1,546.00
Drop Width 44'	\$487.00	\$607.00	\$647.00	\$806.00	\$964.00	\$1,263.00	\$1,124.00	\$1,481.00	\$1,283.00	\$1,700.00
Drop Width 48'	\$531.00	\$663.00	\$706.00	\$879.00	\$1,053.00	\$1,379.00	\$1,226.00	\$1,616.00	\$1,400.00	\$1,854.00
Drop Width 52'	\$577.00	\$717.00	\$764.00	\$953.00	\$1,140.00	\$1,493.00	\$1,329.00	\$1,751.00	\$1,516.00	\$2,010.00
Drop Width 56'	\$621.00	\$773.00	\$823.00	\$1,026.00	\$1,229.00	\$1,609.00	\$1,430.00	\$1,886.00	\$1,633.00	\$2,164.00
Drop Width 60'	\$667.00	\$829.00	\$881.00	\$1,099.00	\$1,316.00	\$1,723.00	\$1,533.00	\$2,020.00	\$1,750.00	\$2,319.00
Drop Width 64'	\$710.00	\$883.00	\$941.00	\$1,171.00	\$1,403.00	\$1,837.00	\$1,634.00	\$2,154.00	\$1,866.00	\$2,473.00
Drop Width 68'	\$754.00	\$939.00	\$1,000.00	\$1,246.00	\$1,491.00	\$1,953.00	\$1,737.00	\$2,290.00	\$1,983.00	\$2,627.00
Drop Width 72'	\$799.00	\$994.00	\$1,059.00	\$1,319.00	\$1,579.00	\$2,067.00	\$1,839.00	\$2,424.00	\$2,100.00	\$2,873.00
Drop Width 76'	\$843.00	\$1,049.00	\$1,117.00	\$1,391.00	\$1,667.00	\$2,183.00	\$1,941.00	\$2,559.00	\$2,216.00	\$2,937.00
Drop Width 80'	\$887.00	\$1,104.00	\$1,176.00	\$1,466.00	\$1,754.00	\$2,297.00	\$2,043.00	\$2,694.00	\$2,333.00	\$3,091.00

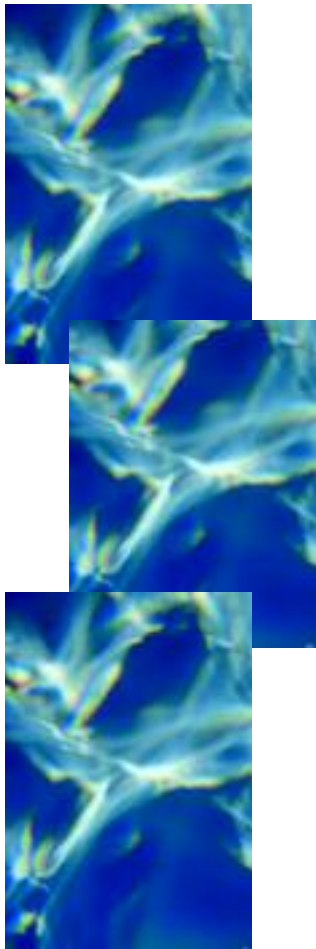
Scenic

Drops & Scrims

Prices are before discount. See back cover for details.

Scenic

Entrant:
Producing Organization: SUNY-Fredonia
Lighting Designer: Phillip Alfano



SEAMLESS SHARKTOOTH SCRIM DROPS—FLAME RETARDANT

UP TO HEIGHT	WHITE		BLACK		BLUE
	20'3"	30'3"	20'3"	30'3"	29'3"
Drop Width 24	\$1,059.00	\$1,247.00	\$1,130.00	\$1,334.00	\$1,319.00
Drop Width 30	\$1,324.00	\$1,559.00	\$1,413.00	\$1,667.00	\$1,647.00
Drop Width 36	\$1,589.00	\$1,871.00	\$1,696.00	\$2,000.00	\$1,977.00
Drop Width 42	\$1,853.00	\$2,183.00	\$1,979.00	\$2,334.00	\$2,307.00
Drop Width 48	\$2,119.00	\$2,494.00	\$2,261.00	\$2,667.00	\$2,636.00
Drop Width 54	\$2,383.00	\$2,806.00	\$2,544.00	\$3,001.00	\$2,966.00
Drop Width 60	\$2,647.00	\$3,119.00	\$2,827.00	\$3,334.00	\$3,296.00
Drop Width 70	\$3,089.00	\$3,637.00	\$3,297.00	\$3,890.00	\$3,844.00
Drop Width 90	\$3,971.00	\$4,677.00	\$4,240.00	\$5,001.00	\$4,243.00

SEAMLESS MUSLIN DROP—FLAME RETARDANT

UP TO HEIGHT	NATURAL			WHITE			SKY BLUE & LIGHT GRAY	
	19'0"	24'3"	32'0"	19'0"	24'3"	32'0"	19'0"	32'0"
Drop Width 20	\$607.00	\$1,303.00	\$1,516.00	\$709.00	\$1,523.00	\$1,869.00	\$839.00	\$2,066.00
Drop Width 28	\$850.00	\$1,824.00	\$2,121.00	\$993.00	\$2,131.00	\$2,616.00	\$1,174.00	\$2,891.00
Drop Width 36	\$1,093.00	\$2,344.00	\$2,727.00	\$1,277.00	\$2,740.00	\$3,364.00	\$1,510.00	\$3,717.00
Drop Width 44	\$1,336.00	\$2,866.00	\$3,334.00	\$1,560.00	\$3,350.00	\$4,111.00	\$1,846.00	\$4,544.00
Drop Width 52	\$1,580.00	\$3,387.00	\$3,940.00	\$1,844.00	\$3,959.00	\$4,859.00	\$2,181.00	\$5,370.00
Drop Width 60	\$1,823.00	\$3,907.00	\$4,546.00	\$2,127.00	\$4,567.00	\$5,607.00	\$2,517.00	\$6,196.00
Drop Width 68	\$2,066.00	\$4,429.00	\$5,153.00	\$2,411.00	\$5,177.00	\$6,354.00	\$2,853.00	\$7,023.00
Drop Width 72	\$2,187.00	\$4,689.00	\$5,456.00	\$2,553.00	\$5,481.00	\$6,729.00	\$3,021.00	\$7,436.00
Drop Width 80	\$2,430.00	\$5,210.00	\$6,061.00	\$2,837.00	\$6,090.00	\$7,476.00	\$3,357.00	\$8,261.00

ALL PRICES ARE SUBJECT TO CHANGE WITHOUT NOTICE.